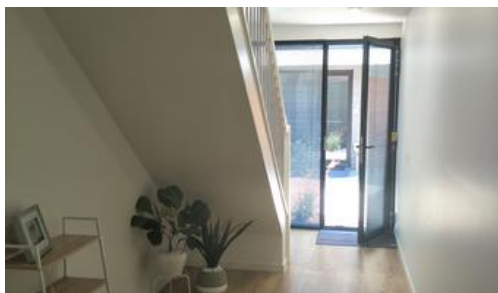


Leased

## Unit 11, 230 Station St, Edithvale



### By the Sea Side - Spacious 3 Bed Room Town House

This near new townhouse has it all. Offering a stunning lifestyle opposite Edithvale beach, station and shops. Featuring a spacious living area on the first floor with large balcony and bay views, 3 good size bedrooms with the main bedroom on the ground level with ensuite and walk in robe. There is a large study area under the stairwell and remote double garage. Other features include lockable double glazed windows with screens, reverse cycle heating and cooling, timber flooring throughout with carpet in the bedrooms, small court yard, solar hot water, low maintenance building. Be quick to inspect!

Available Now. Inspect by appointment, email

[rentals@westonrealestate.melbourne](mailto:rentals@westonrealestate.melbourne) or please call Michael Weston 0458 000 456.

🛏 3 🚿 2 🚗 2

<b>Price</b>	\$585 Per Week
<b>Property Type</b>	Rental
<b>Property ID</b>	425

#### Agent Details

Michael Weston - 0458 000 456

#### Office Details

Patterson Lakes  
PO Box 328 Patterson Lakes VIC  
3197 Australia  
1300 655 575

The above information provided has been furnished to us by the vendor/s. We have not verified whether or not that information is accurate and do not have any belief in one way or the other in its accuracy. We do not accept any responsibility to any person for its accuracy and do no more than pass it on. All interested parties should make and rely upon their own inquiries in order to determine whether or not this information is in fact accurate.

